



### Bur 系列

(直機)



### A. ROUND BURS

Item Number	Head Shank	Head Material	Head Diam.	Bur Number	Total Length	Cutting Length	Features
21-44-0060	HP	Carbide	1.8mm	6	44mm	-	10/Pkg.
21-50-0060	HP	Carbide	1.8mm	6	50mm	-	10/Pkg.
21-65-0060	HP	Carbide	1.8mm	6	65mm	-	10/Pkg.
21-44-0080	HP	Carbide	2.3mm	8	44mm	-	10/Pkg.
21-50-0080	HP	Carbide	2.3mm	8	50mm	-	10/Pkg.
21-65-0080	HP	Carbide	2.3mm	8	65mm	-	10/Pkg.

(直機)



### B. CYLINDER BUR

40-50-0016	HP	Carbide	1.5mm	-	50mm	7.5mm	10/Pkg.
------------	----	---------	-------	---	------	-------	---------

(直機)



### C. TAPER BURS(CARBIDE)

61-44-0002	HP	Carbide	1.6mm	702	44mm	5mm	10/Pkg.
61-50-0002	HP	Carbide	1.6mm	702	50mm	5mm	10/Pkg.
85-21-4886	HP	Carbide	1.2mm	701	44mm	5mm	10/Pkg.
85-21-4883	HP	Carbide	1mm	700	44mm	5mm	10/Pkg.

(直機)



### D. OVAL BONE CUTTING BURS

31-68-0031	HP	Carbide	4mm	-	68mm	9mm	Cross Cut
31-50-0023	HP	Carbide	5.5mm	-	50mm	10mm	Cross Cut
504-080505	HP	Carbide	5.5mm	-	70mm	10mm	Cross Cut

(直機)



### E. LINDEMANN BURS

19-26-0162	FG	SS	1.6mm	-	26mm	9mm	-
10-44-0166	HP	SS	2mm	-	44mm	10mm	-
10-44-0166S	SN	SS	2mm	-	44mm	10mm	-
10-65-0168	HP	SS	2.3mm	-	65mm	24mm	-
10-65-0168S	SN	SS	2.3mm	-	65mm	24mm	-
10-80-0169	HP	SS	2.3mm	-	80mm	35mm	-

### 植牙必備修正角度專用Bur

(彎機)



### F. KIRSCHNER BURS (前端有鋸齒狀可修正角度)

88-33-0010	CA	SS	3.15-4mm	-	34mm	15mm	Internal Irr.
88-33-0009	CA	SS	1.6-2.35mm	-	34mm	15mm	Internal Irr.

(彎機)



### G. ROUND BURS FOR BONE CUTTING (含內沖修骨Bur)

11-26-0020	CA	SS	2mm	-	26mm		Int.Irrigation
811C030RAXL	CA	SS	3mm	-	34mm		Int.Irrigation
811C040RAXL	CA	SS	4mm	-	34mm		Int.Irrigation
811C060RAXL	CA	SS	6mm	-	34mm		Int.Irrigation



### Q 6966 Sterilization basket

made of stainless steel, for small parts, 直徑 46mm  
是微型小器械高溫消毒的好幫手!

(彎機)



### H. CRESTOTOME BUR (修整骨平面Bur)

11-26-0357	CA	SS	3.75-7mm	-	26mm	7mm	Internal Irr.
------------	----	----	----------	---	------	-----	---------------

### I. Sinus Scoring Diamond Burs

開鼻竇專用Bur  
直機、彎機手機專用



編號：W-90250018

編號：W-90440018

### J. Sinus Lift Egg Burs

(獨特SinusBur，修骨不會產生跳動) 45mm,2.8HD

編號：W-00450028

### K. Stop Pilot Twist Drill

小直徑的Drill

Ø 1.2mm, Single Patient-Sterile

MDLSPD

Ø 1.2mm, Single Patient 13mm Long-Sterile

MDLSPDL

Ø 1.5mm, Stop 8-10-11, 5-13-15mm

D1515

Ø 2.0mm, Stop 8-10-11, 5-13-15mm

D2015

### L. IntraLock™ Drill

三角定位 (定位時不會產生跳動)  
Lancer 0-2mm-Sterile

編號：LD

### M. Step Drill (Lag Screw)

三角定位 (定位時不會產生跳動)



編號：V-186RF018

### N. Step Drill (Lag Screw)

補骨打洞專用

0.8mm, 1.6mm Steps, Contra-Angle

W-454-281001

Ø 1.1mm, Optional Pilot Drill, CA

W-454-40201

### O. 取出Abutment 斷裂Screw 的好幫手

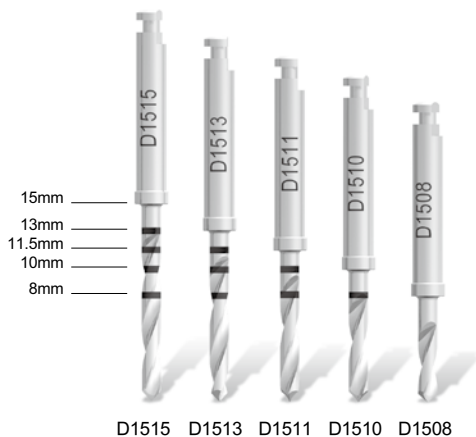
Screw fracture Remover 1.6mm



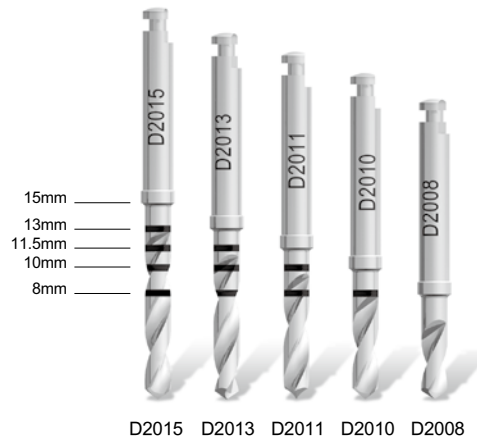
3-A-CSR16-S



#### Stop Pilot Twist Drills-Ø1.5mm



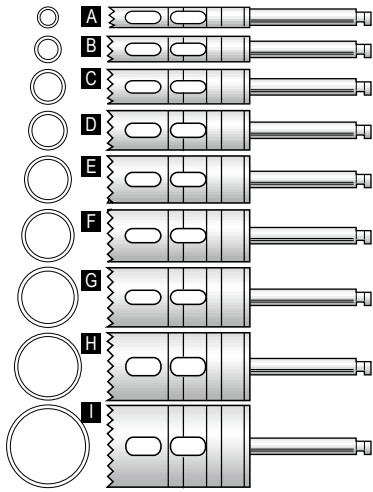
#### Stop Pilot Twist Drills-Ø2.0mm





# ACE 取骨環鑽

硬度 · 材質最耐用

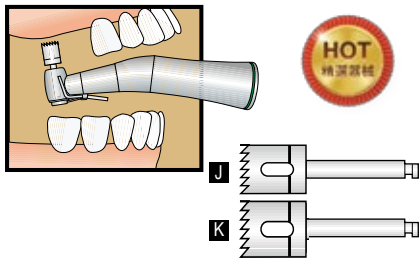


## Trephine Burs - Contra Angle

一般長度 (彎機專用)

Manufactured from titanium (Ti-6Al-4V ELI).

Item number	Shank	Head Material	I.D.	O.D.	Total Length	Cuting Length	Markings	
A	04-9480-01	CA	Ti	2mm	2.8mm	35mm	18.5mm	8,10,13,15,18mm
B	04-9480-02	CA	Ti	2.7mm	3.5mm	35mm	18.5mm	8,10,13,15,18mm
C	04-9482-01	CA	Ti	3.75mm	4.6mm	35mm	18.5mm	8,10,13,15,18mm
D	04-9482-02	CA	Ti	4.25mm	5.10mm	35mm	18.5mm	8,10,13,15,18mm
E	04-9484-01	CA	Ti	5.25mm	6.10mm	32mm	15.5mm	8,10,13,15mm
F	04-9485-01	CA	Ti	6mm	6.9mm	32mm	15.7mm	8,10,13,15mm
G	04-9485-02	CA	Ti	7mm	7.9mm	32mm	15.7mm	8,10,13,15mm
H	04-9487-01	CA	Ti	8mm	8.9mm	32mm	14mm	8,10,13mm
I	04-9487-02	CA	Ti	10mm	10.95mm	32mm	14mm	8,10,13mm



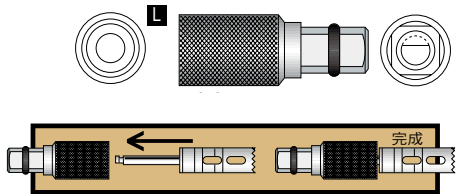
## DR. Smiler's Trephine Burs - Posterior

後牙區專用較短淺

Manufactured from titanium (Ti-6Al-4V ELI).



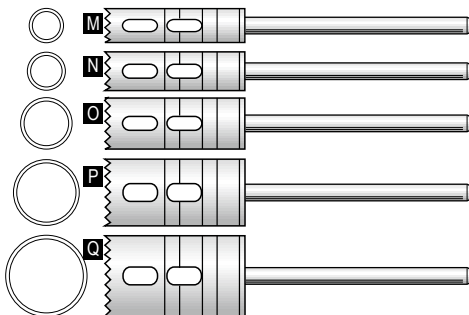
Item number	Shank	Head Material	I.D.	O.D.	Total Length	Cuting Length	Markings	
J	04-9486-01	CA	Ti	6mm	6.9mm	23mm	6.75mm	6mm
K	04-9486-02	CA	Ti	7mm	7.9mm	23mm	6.75mm	6mm



## Latch To Square Driver Converter

L 20-1554-11 14mm long, secures and locks contra shaft for hand or ratchet drive

彎機改手動轉接頭



## Trephine Burs - Handpiece

直機專用

Manufactured from titanium (Ti-6Al-4V ELI).



Item number	Shank	Head Material	I.D.	O.D.	Total Length	Cuting Length	Markings	
M	04-9492-01	HP	Ti	3.75mm	4.6mm	52mm	18.5mm	8,10,13,15,18mm
N	04-9492-02	HP	Ti	4.25mm	5.1mm	52mm	18.5mm	8,10,13,15,18mm
O	04-9495-01	HP	Ti	6mm	6.9mm	49mm	15.7mm	8,10,13,15mm
P	04-9497-01	HP	Ti	8mm	8.9mm	49mm	14mm	8,10,13mm
Q	04-9497-02	HP	Ti	10mm	10.95mm	49mm	14mm	8,10,13mm

### 臨床操作圖

讓您手術更得心應手，可搭配自體骨磨骨、碎骨器使用 P27





## Kohler™ Tissue Punch

### 彎機-- 軟組織切割器

不翻牙肉組織必備好幫手!



彎機用

有刻度

編號	外徑
1	7.1mm
2	6.1mm
3	5.1mm
4	4.5mm
5	4.1mm
6	3.5mm
7	3.0mm

無刻度

編號	內徑
8	6.0mm
9	5.0mm
10	4.0mm

前端有定位點

編號	內徑
11	5.5mm
12	4.3mm
13	3.5mm

## Tissue Punch

不翻牙肉組織必備好幫手!

編號	內徑
14	5.0mm
15	4.0mm
16	3.0mm

## Kohler™ Circular knife

### 手動式定位 軟組織切割器

by hand, with centering pin



定位

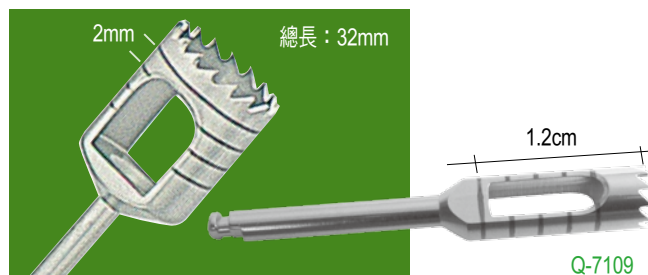
前端有定位點

編號	外徑
17	7.1mm
18	6.1mm
19	5.1mm
20	4.5mm
21	4.1mm
22	3.5mm
23	3.0mm



## Kohler™ Trepine Burs

彎、直機取骨環鑽 材質：不銹鋼 stainless



Q-7109

彎機用

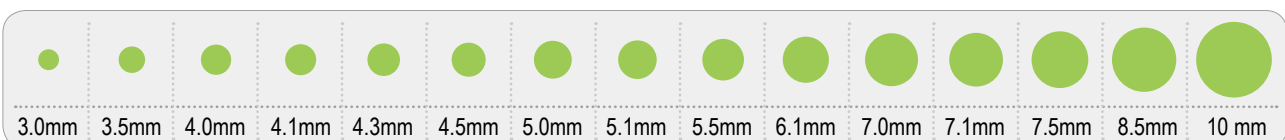


編號	內徑	外徑
Q-6942	2.5mm	3.0mm
Q-6521	3.0mm	3.5mm
Q-7109	4.0mm	5.0mm
Q-6522	5.0mm	6.0mm
Q-6523	7.5mm	8.5mm
Q-6524	10 mm	11 mm

直機用



編號	內徑	外徑
Q-6742	4.0mm	5.0mm
Q-6743	6.0mm	7.0mm
Q-6744	10 mm	11 mm





### Kohler™ Scalpel blades and holders

#### 刀柄系列



Q-4210  
16 cm



Q-4209  
16 cm



Q-5523  
3



Q-6442  
with 2 handles  
13/17cm

依所需角度隨時調整  
可靈活運用於臨床中  
★萬向刀柄  
附17cm & 13cm  
長、短刀柄各一支



一次可裝2片刀片

兩刀片間距  
1.0mm

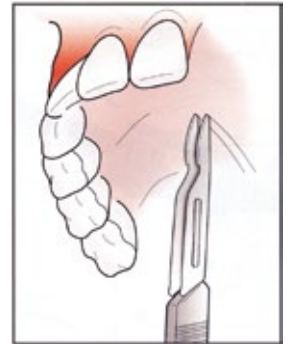
兩刀片間距  
1.5mm



Q-5527  
16 cm  
for 2 blades



Q-5528  
16 cm  
for 2 blades



Q-5527, Q-5528操作方式

### Handle for micro scalpel blades

#### Micro scalpel blades



Q-6747

Handle for micro scalpel blades  
Ø 6.5 mm



Q-5034



Q-7693

Ø 6.5 mm



### 進口手術專用刀片 規格：100片/盒



#11 一般刀片



#12 一般刀片



#15 一般刀片

◎ 比一般刀片直徑較小



#12d 雙面刀片  
Q-4969



#15C 細頭微彎  
W-0037315